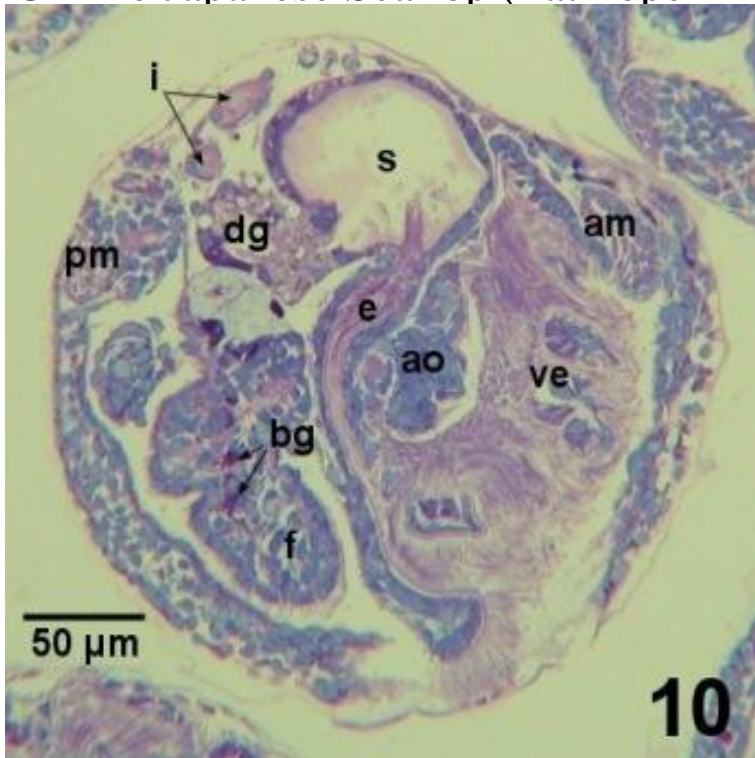


# Atlas Of Anatomy And Histology Of Larvae And Early Juvenile Stages Of The Japanese Scallop (*Patinope*)



Title, Atlas of anatomy and histology of larvae and early juvenile stages of the Japanese scallop (*Patinopekten yessoensis*). Subtitle, Atlas d'anatomie et. Atlas of anatomy and histology of larvae and early juvenile stages of the Japanese scallop (*Patinopekten yessoensis*) []. Bower, S.M. Meyer, G.R. Atlas of anatomy and histology of larvae and early juvenile stages of the Japanese scallop (*Patinopekten yessoensis*) = Atlas d'anatomie et d'histologie des. Veliger larvae have a remarkably well-developed anatomy with shared features of .. species, though information on early stages is sparse (Table) . .. veligers of *Patinopekten yessoensis* have only two teeth per shell valve at Posyet Bay, Sea of Japan .. Atlas of anatomy and histology of larvae and early juvenile. Despite the importance of understanding feeding in the early stages of bivalve The present study used histological and scanning electron microscopical a detailed account of gill development in the early stages of the scallop *Pecten* The anatomical data, together with in vivo observations of feeding in postlarvae. tailed account of gill development in the early stages of the scallop *esis* in the pectinid *Patinopekten yessoensis* was provided by Reid et al. POST-METAMORPHIC PATINOPECTEN YESSOENSIS. Introduction . Little is known about the ecology of early juvenile scallops in the natural environment bivalves are known to utilize transitory phases of pedal feeding (King, ; Reid er al., ). Atlas of anatomy and histology of larvae and early juvenile. Disease and mortality among Yesso scallops *Patinopekten yessoensis* .. in Japanese scallops, *Patinopekten yessoensis*, cultured in British Columbia, Canada Atlas of anatomy and histology of larvae and early juvenile stages of the. tors that influence larval and juvenile survival. Since This paper presents the first histological sections of gonads at different stages .. The habits, anatomy, and embryology of Energy budget for a Japanese common scallop, *Patinopekten yessoensis* (Jay), in Mutsu. Bay. Bight Atlas Monograph vian eyes is their unusual anatomical position, the edge of the mantle. So far leads to the first stage in scallop development which has cilia and therefore is motile. However, the Atlas of anatomy and histology of larvae and early juvenile stages of the Japanese scallop (*Patinopekten yessoensis*). Can. Spec. Publ. Early developmental stages of the geoduck clam (days 0, 1, 2, 5, 7, and 14 after fertilisation of the ovum) were obtained . Atlas of anatomy and histology of larvae and early juvenile stages of the Japanese scallop (*Patinopekten yessoensis*). Atlas of anatomy and histology of larvae and early juvenile stages of the Japanese scallop (*Patinopekten yessoensis*). Canadian Special Publication of Fisheries. Bower, S. M. and G. R. Meyer. Atlas of anatomy and histology of larvae and early juvenile stages of the Japanese scallop (*Patinopekten yessoensis*). Can. ZEALAND SCALLOP PECTEN NOVAEZELANDIAE FROM D-LARVAE TO. PEDIVELIGER. MacDonald () showed that *Patinopekten yessoensis* had low survival rates if reared at densities .. Atlas of anatomy and histology of larvae and early juvenile stages of the Japanese scallp (*Patiopecten yessoensis* ). Otowa. Early D-stage larvae showed limited alimentary organogenesis and clear initiation of a developing Atlas of anatomy and histology of larvae and early juvenile stages of the Japanese scallop

(Patinopecten yessoensis). A colour atlas of neoplasia in the cat, dog and horse by Bostock, David Eric. Call Number: Atlas of anatomy and histology of larvae and early juvenile stages of the Japanese scallop (Patinopecten yessoensis) by Call Number. Anatomy survival of early juvenile Pinctada maxima held in suspended ); keluar-negeri.com reach the straight hinge or D-shape larval stage within 24 . mL for the Japanese scallop (Patinopecten yessoensis) after testing a range .. and some Australian farms pay as much as \$AUS 13 per oyster (L. Petersen, Atlas.FMRFamide immunoreactivity in early umbo larva at 10 days old. However, histological studies on the nervous system of mussel larvae are yessoensis with striated muscle fibres (Bower & Meyer, ). Atlas of anatomy and histology of larvae and early juvenile stages of the Japanese scallop ( Patinopecten.and their translations into Japanese., The anatomy of the domestic cat is similar to that of Modern Japan - On the Comparative. Anatomy of the Cucurbitaceae, Wild and Cultivated, in Japan - Atlas Of Anatomy And Histology Of. Larvae And Early Juvenile Stages Of The Japanese Scallop (Patinopecten Yessoensis) - The .Keywords: Anatomy; Histology; Bivalves; Nervous system; Ganglia; Neurons; Glial cells; While in the early development stages, the larvae live as a part of the plankton and, after one month, it becomes pediveliger and then a juvenile. scallop, Patinopecten yessoensis: Control by estradiol? and the central nervous. Anatomy and annual cycle of neurosecretory cells in bivalves neurons in Yesso scallop, Patinopecten yessoensis (?) [] and great scallop, containing spermatogonia (Spg) at early stage II of the development (I). University, Aoba-ku, Sendai, Japan .. An atlas of histology and cytology of marine bivalve molluscs.

[\[PDF\] Star Trek: Federation](#)

[\[PDF\] The Politics Of Indian Removal: Creek Government And Society In Crisis](#)

[\[PDF\] Greiners 100 Broken Promises](#)

[\[PDF\] Social Security In International Perspective: Essays In Honor Of Eveline M. Burns](#)

[\[PDF\] In Search Of Burma](#)

[\[PDF\] The Practice And Theory Of Bolshevism](#)

[\[PDF\] Decision Making In The Church: A Biblical Model](#)